






EXPLORING THE **UNSEEN**,
CONQUERING THE **EXTREME**

WINTER 4x4 EXPEDITION

SPITI VALLEY



BOOK NOW

 whiteexpeditionoffice@gmail.com  +91-8580659518  www.whiteexpeditions.com





WINTER SPITI 4X4 EXPED

A thrilling drive through snow-clad mountains and frozen rivers.

- ✔ Conquer icy roads, treacherous passes, and unforgiving terrain.
- ✔ Experience the raw beauty of Spiti's winter wonderland.
- ✔ A journey of grit, adventure, and unmatched landscapes.
- ✔ Witness frozen monasteries, remote villages, and serene valleys.
- ✔ Test your skills, resilience, and spirit of adventure.
- ✔ Drive through the heart of the Himalayas, where every mile tells a story



WINTER IN SPITI BEAUTIFUL BUT CHALLENGING



Spiti Valley in winter is stunning, **covered in snow and full of peace**. But the cold weather is harsh, and snowfall can happen anytime, making it unpredictable.

Even if you have a **4x4 vehicle**, roads may close for a day or two due to snow. You need to bring very warm clothes and be ready for the cold. **More importantly, come with a strong mind to handle the challenges.**

Winter in Spiti is not just a trip—**it's an adventure**. If you're ready, it will give you amazing memories and breathtaking views.



TOYOTA



DAY-01

SHIMLA TO KALPA

- **Distance:** ~225 km
- **Altitude:** Shimla (2,276 m) to Kalpa (2,960 m)
- **Driving Time:** 8–9 hours
- **Points of Interest:**
 - Narkanda, Rampur, Tranda Dhank**
 - Kalpa:** Kalpa Monastery, Suicide Point, Roghi Village.
 - Night stay at Kalpa – (Hotel kinner villa)**

DAY-02

KALPA TO NAKO TO TABO

- **Kalpa to Nako:** 110 km (4–5 hours).
- **Nako to Tabo:** 63 km (2–3 hours).
- **Altitude:** Kalpa (3,050 m), Nako (3,662 m), Tabo (3,280 m).
- **Points of Interest:**
 - Nako Lake, Nako Monastery.
 - Khab sangam, Nako , Gue mummy
 - Night Stay At Tabo – Maitreya Mud House**

DAY-03

TABO TO DHANKAR TO KAZA

Distance:

Tabo to Dhankar: 22 km (~1 hour).

Dhankar to Kaza: 32 km (1.5–2 hours).

Altitude: Dhankar (3,894 m), Kaza (3,650 m).

Points of Interest: Tabo monastery, Tabo cave , Dhankar monastery, ice cafe , kaza

Night Stay at Kaza – Victorious Palace



DAY-04

KAZA TO KOMIC

- **Distance**

Kaza to Komic : 23 km

Chicham to Kibber: 15 km (40 minutes).

- **Altitude:** Chicham (3,800 m), Kibber (4,000 m), Ki (4,205 m).

- **Points of Interest**

Chicham Bridge (Highest Bridge in Asia).

Kibber Monastery, Wildlife Sanctuary.

Key monastery Langza, Komic

Night stay At World highest Village Komic Jordan Homestay or Back to Kaza Hotel

DAY-05

KOMIC TO NAKO

- **Komic to Nako :** 128km

- **Langza to Komic:** 7 km (30 minutes).

- **Komic to Hikkim:** 4 km (20 minutes).

- **Altitude:** Langza (3,800 m), Komic (4,587 m), Hikkim (4,400 m).

- **Points of Interest**

Hikkim Highest post office, Nako lake and view point .

Night stay at Nako -Nako Regency

DAY-06

NAKO TO CHITKUL

- **Nako to chitkul :** 150km

- **Altitude:** Tabo (3,800 m) to Chitkul (2,712 m).

- **Features:** Baspa River, Indo-Tibetan border, Rakcham village

- **Point of interest :** Chitkul last village of india , Sangla , Rakcham

- **Night Stay at Rakcham - Toshim homestay**



DAY-07

CHITKUL TO SHIMLA

- **Chitkul to shimla** : 244km
- **Altitude**: Sangla (2,612 m) to Shimla (2,276 m)



TOYOTA



THINGS TO CARRY-

Here's a more comprehensive checklist for your ice-climbing and mountain expeditions:

✔ Clothing and Gear:

Warm clothes (thermal base layers, insulated jacket, waterproof outer layer).

Sunglasses (UV-protected, glacier-specific).

Warm socks (preferably merino wool).

Gloves (waterproof and insulated, with a lighter inner pair for flexibility).

Cap/Beanie (thermal and windproof).

✔ Essentials:

Water bottle (insulated to prevent freezing).

Sunscreen (SPF 50+ and lip balm with SPF).

ID cards (personal identification and permits).

Snacks (high-energy bars, nuts, dried fruits).

Headlamp (with extra batteries).



TOYOTA



INCLUSIONS

4x4 Vehicle with Professional Driver: Enjoy a safe and thrilling ride through the rugged terrain with an experienced driver at the wheel.

Premium Accommodation: Relax in handpicked, comfortable stays that offer the perfect blend of warmth and luxury amidst the cold Spiti winters.

Breakfast & Dinner: Savor delicious meals to fuel your adventures every day.

Backup Support Team with 4x4 Vehicle: A reliable backup team ensures smooth operations and assistance throughout the journey.

Recovery Equipment: Essential tools like snow chains and shovels to tackle any road challenges.

Walkie-Talkie Radio Communication: Stay connected with the team even in remote areas.

All Necessary Permits: Seamless travel with pre-arranged permits for your expedition.

Bonfire & Music Night: Unwind under the starry sky with a cozy bonfire and soothing music.

Stay in the World's Highest Village: Experience the unique charm of living in one of the highest inhabited villages on Earth.

Medical Assistance: Travel worry-free with medical support, including oxygen cylinders for high-altitude needs.

This expedition promises an unparalleled adventure in the heart of Spiti's winter wonderland!



TOYOTA

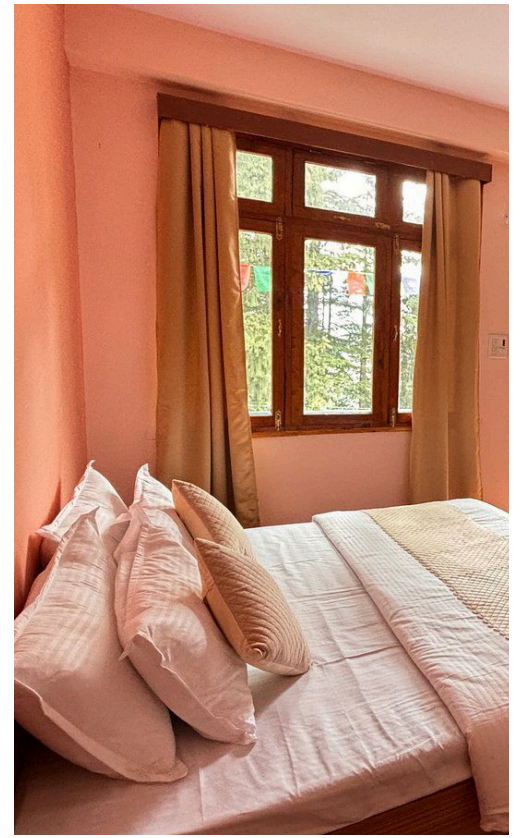


ACCOMMODATION DETAILS

- ✓ **Kalpa** - Hotel Kinner Villa
- ✓ **Tabo** - Maitreya Mud House
- ✓ **Kaza** - Victorious Palace
- ✓ **Nako** - Nako Regency
- ✓ **Rakcham** - Toshim homestay

HAVE A LOOK TO THEM AT NEXT PAGE>>>>>





4X4 VEHICLE OPTIONS ALONG WITH THEIR PRICE PER PERSON (P/P)



SUZUKI JIMNY
₹40,000 P/P



MAHINDRA THAR
₹40,000 P/P



ISUZU D-MAX
₹45,000 P/P



TOYOTA FORTUNER
₹45,000 P/P



TOYOTA HILUX
₹50,000 P/P



TATA YODHA
₹40,000 P/P



MAHINDRA SCORPIO
₹40,000 P/P



MARUTI GYPSY
₹35,000 P/P

YOUR OWN VEHICLE :- 30,000 P/P

SELF DRIVE RENT CAR :- 90,000 P/P(FOR 2 PERSON) AND 60000(FOR 4 PERSON)

“IT’S NOT JUST A PACKAGE; IT’S A LIFETIME EXPERIENCE YOU MAY FIND CHEAPER OPTIONS, BUT WHAT WE DELIVER IS UNMATCHED IN QUALITY, SAFETY, AND UNFORGETTABLE MEMORIES. WE KNOW OUR VALUE— AND SO WILL YOU.”

